



Welcome

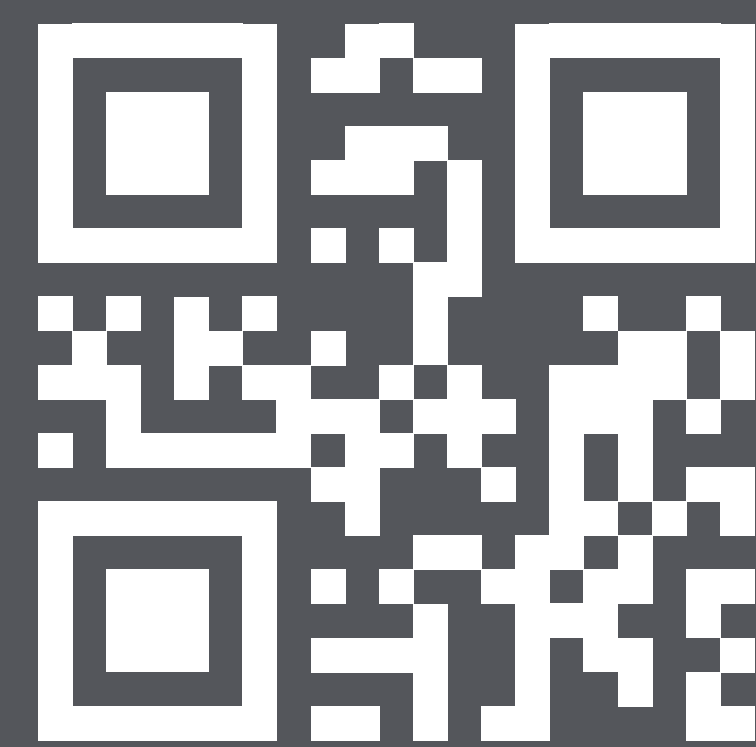
Homer Harbor Expansion Public Meeting

Feedback is welcomed via email, phone, or web



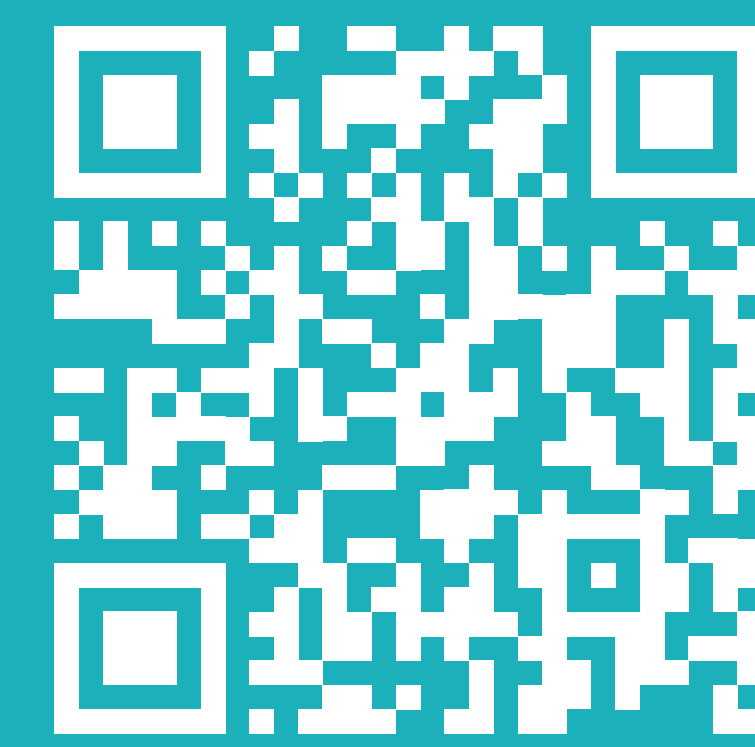
Email:

info@homerharborexansion.com



Phone:

(907) 268-2909



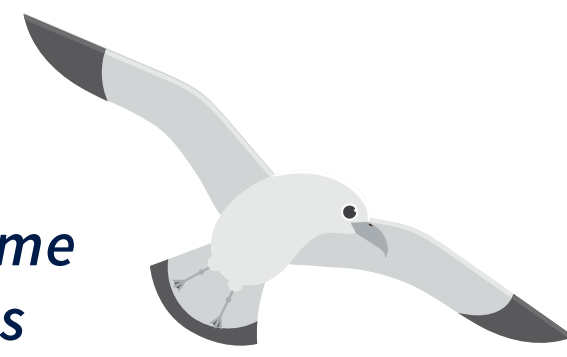
For more information:

homerharborexansion.com

Scan each QR code with your smartphone.



INITIAL ALTERNATIVES SCREENING: ALTERNATIVES NOT CARRIED FORWARD



All US Army Corps of Engineers alternatives below assume that minimum local service facilities will be available as well as meet the needs for both small and large boats.

ALT	Description	Location	Accommodating Current Needs / Future Fleets	Completeness	Effectiveness	Efficiency	Acceptability	Implementability	Satisfaction
				Necessary actions accounted for	How well does it meet the goals and objectives	What is the cost benefit	Does it meet the regulations and requirements	Is implementation practical	How satisfied will the stakeholders be
ALT 3a	An enclosed harbor where the outer breakwaters of the enclosure are floating breakwater structures. Creates minimal room for local service facilities on the top surface area.	East side of Spit adjacent to existing harbor	Current Needs + Future Fleet	High	Low	Low	High	No	High
ALT 3b	An enclosed harbor where the outer breakwaters of the enclosure are a combination of floating and non-floating breakwater structures; creates some room for local services facilities on the top surface area.	East side of Spit adjacent to existing harbor	Current Needs + Future Fleet	High	Low	Low	High	No	High
ALT 4	Excavation of some of the uplands around the existing harbor to make more room for boats.	Within existing harbor	N/A	Low	Low	Low	Low	No	Low
ALT 5a	Creating a new harbor at Diamond Creek.	Off Spit, near Diamond Creek	Current Needs + Future Fleet	Low	Low	Low	Low	No	Low
ALT 5b	Creating a new harbor east of the Homer Airport.	Off Spit, east of Homer Airport	Current Needs + Future Fleet	Medium	Medium	Low	Low	No	Low
ALT 5c	Creating a new harbor in Seldovia.	Off Spit, Seldovia	Current Needs + Future Fleet	Low	Low	Low	Low	No	Low
ALT 6	Reconfigure existing harbor for large vessels; build new harbor for small boats on outside of existing harbor.	East side of Spit adjacent to existing harbor	Current Needs + Future Fleet	Low	Low	Medium	Low	No	Medium
ALT 7	Rearranging the dock floats inside the harbor.	Within existing harbor	Current Needs	Low	Low	Low	Medium	No	Low



Alternatives Carried Forward: Alternative 1A



A single enclosed basin where the outer breakwaters of the enclosure create no additional room for local service facilities on the top surface area.

Location	Accommodating Current Needs / Future Fleets	Completeness	Effectiveness	Efficiency	Acceptability	Implementability	Satisfaction
		Necessary actions accounted for	How well does it meet the goals and objectives	What is the cost benefit	Does it meet the regulations and requirements	Is implementation practical	How satisfied will the stakeholders be
East side of Spit adjacent to existing harbor	Current + Future Needs	High	Medium	Medium	High	Yes	High

All US Army Corps of Engineers alternatives assume that minimum local service facilities will be available as well as meet the needs for both small and large boats.





Alternatives Carried Forward: Alternative **1B**



A single enclosed basin where the outer breakwaters of the enclosure have some room for local service facilities on the top surface area.

Location	Accommodating Current Needs / Future Fleets	Completeness	Effectiveness	Efficiency	Acceptability	Implementability	Satisfaction
		Necessary actions accounted for	How well does it meet the goals and objectives	What is the cost benefit	Does it meet the regulations and requirements	Is implementation practical	How satisfied will the stakeholders be
East side of Spit adjacent to existing harbor	Current Needs + Future Fleet	High	High	Medium	High	Yes	High

All US Army Corps of Engineers alternatives assume that minimum local service facilities will be available as well as meet the needs for both small and large boats.





Alternatives Carried Forward: Alternative **1C**



An enclosed T-shape harbor where the outer breakwater of the enclosure have some room for local service facilities on the top surface area.

Location	Accommodating Current Needs / Future Fleets	Completeness Necessary actions accounted for	Effectiveness How well does it meet the goals and objectives	Efficiency What is the cost benefit	Acceptability Does it meet the regulations and requirements	Implementability Is implementation practical	Satisfaction How satisfied will the stakeholders be
East side of Spit adjacent to existing harbor	Current Needs + Future Fleet	High	High	Medium	Medium	Yes	High

All US Army Corps of Engineers alternatives assume that minimum local service facilities will be available as well as meet the needs for both small and large boats.





Alternatives Carried Forward: Alternative **1D**



A crescent shape enclosed basin where the outer breakwaters of the enclosure have maximum room for local service facilities on the top surface area. Access to basin connects Spit away from existing harbor.

Location	Accommodating Current Needs / Future Fleets	Completeness Necessary actions accounted for	Effectiveness How well does it meet the goals and objectives	Efficiency What is the cost benefit	Acceptability Does it meet the regulations and requirements	Implementability Is implementation practical	Satisfaction How satisfied will the stakeholders be
East side of Spit adjacent to existing harbor	Current Needs + Future Fleet	High	High	Low	Low	No	Medium

All US Army Corps of Engineers alternatives assume that minimum local service facilities will be available as well as meet the needs for both small and large boats.





Alternatives Carried Forward: Alternative 2



A basin protected by a breakwater that is detached from the shore, creating a tranquil harbor space.

Location	Accommodating Current Needs / Future Fleets	Completeness	Effectiveness	Efficiency	Acceptability	Implementability	Satisfaction
		Necessary actions accounted for	How well does it meet the goals and objectives	What is the cost benefit	Does it meet the regulations and requirements	Is implementation practical	How satisfied will the stakeholders be
East side of Spit adjacent to existing harbor	Current + Future Needs	High	Medium	Medium	High	Yes	High

All US Army Corps of Engineers alternatives assume that minimum local service facilities will be available as well as meet the needs for both small and large boats.





Alternatives Carried Forward: **No Action**



The Homer Harbor remains the same.

All US Army Corps of Engineers alternatives assume that minimum local service facilities will be available as well as meet the needs for both small and large boats.





Charter Document

Goals and Objectives

- Relieve transportation congestion
- Improve safety and efficiency within the harbor(s)
- Reduce potential for environmental impacts within the harbor(s)
- Foster a collaborative partnership with the U.S. Army Corps of Engineers
- Expand the community's economic base
- Foster the maritime trades industry and other year-round economic opportunities
- Enhance navigational safety and regional connectivity
- To the extent feasible, prioritize incorporation of:
 - » Green energy (e.g., solar, wind, tidal)
 - » Green infrastructure (e.g., adding vegetation, capturing runoff)
 - » Food security (e.g., support reliable delivery of food and supplies needed in regional communities)
 - » Polar security (e.g., provide support for federal security measures related to arctic navigation)
- Deliver a balanced harbor design that:
 - » Performs necessary port and harbor functions
 - » Has pleasing aesthetics
 - » Is within a sustainable construction, operations, and maintenance budget
 - » Maintains environmental integrity and quality of life
 - » Minimizes adverse impacts to the community
 - » Provides for flexibility that promotes smart growth and a blue economy
 - » Supports services for large vessels
 - » Supports the U.S. Coast Guard's mission at land and at sea

Success Factors

- » Proactively collaborate with the community and port and harbor stakeholders to provide meaningful community and stakeholder engagement opportunities
- » Provide transparency of the decision-making process and design development
- » Align with national priorities for investing in future infrastructure
- » Engage scientific agencies through study advancement
- » Promote educational, research, and scientific opportunities
- » Foster collaborative relationships with Department of Transportation and Public Facilities and other key stakeholder agencies
- » Provide applicable utility providers (e.g., water, sewer, electric) with the necessary input to deliver required support infrastructure
- » Promote strong, sustained support and leadership from the City Staff, City Council, and associated Commissions
- » Identify risks early and manage them appropriately
- » Consistently consider community-wide socioeconomic effects that may result from harbor expansion and align with the current community-wide planning policy
- » Create and sustain a safe, respectful, collaborative, and enjoyable work environment for all City, consultant, and contractor staff
- » Complete construction activities on time, to specification, and within target costs
- » Encourage innovation with a focus on reducing costs, enhancing the environment, and fostering thoughtful community growth

Vision

Recognizing Homer's unique environmental setting and our common desire to live, work, and play here, we will enhance Homer's maritime opportunities in a fiscally, environmentally, and socially responsible manner for the benefit of all.

Mission

Work collaboratively with all segments of the community to explore opportunities to expand necessary infrastructure while ensuring Homer's maritime future, navigational safety, environmental integrity, and regional connectivity. Align the development of any opportunities with the City of Homer Port and Harbor Department Mission Statement.

